

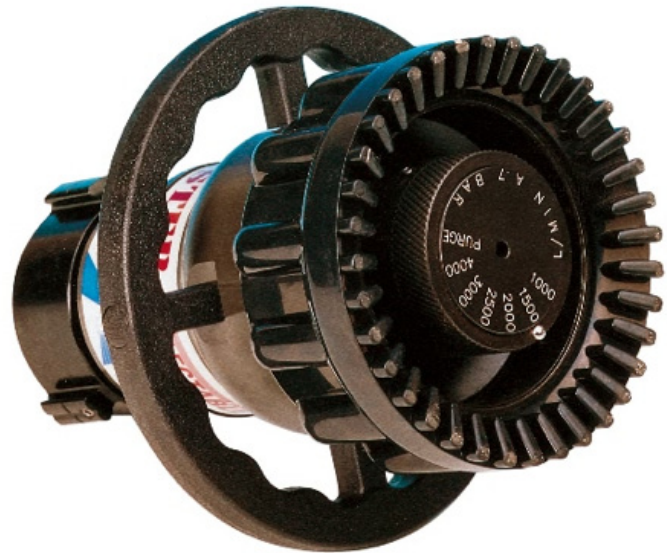


Masterfix SP

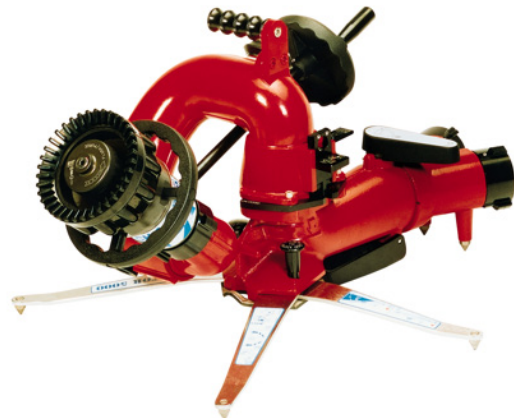
Selectable Flow Monitor Nozzle

Large Flow Range

- Combined **AFFF/water** nozzle designed for straight jet and **+135° fog pattern**.
- Adjusting ring for a more accurate setting of the fog angle
- **2 distinct models :**
 - Masterfix 2500 SP : flow rates : 500, 1000, 1500, 2000 et 2500 l/min
 - Masterfix 4000 SP : flow rates : 1000, 1500, 2000, 2500, 3000 et 4000 l/min
- 2.5" female BSP inlet



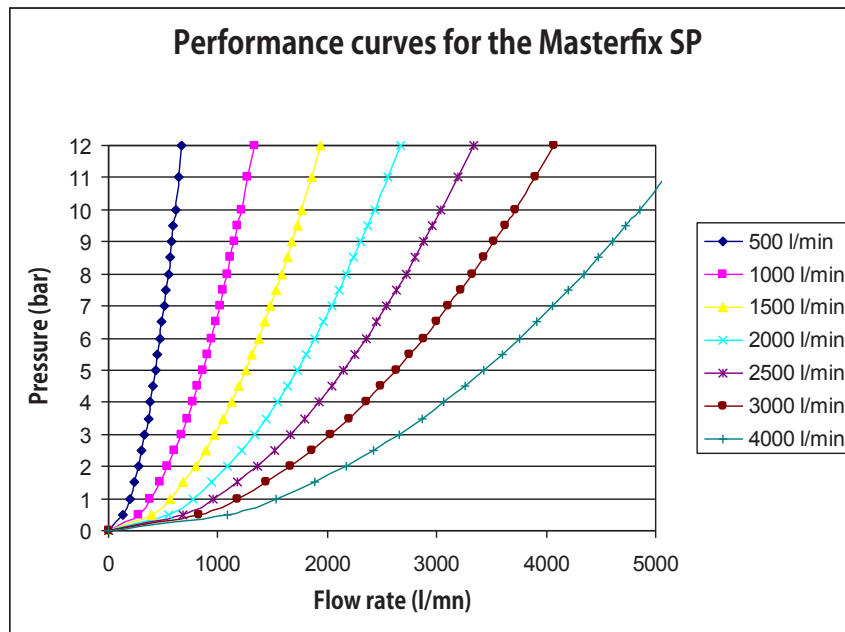
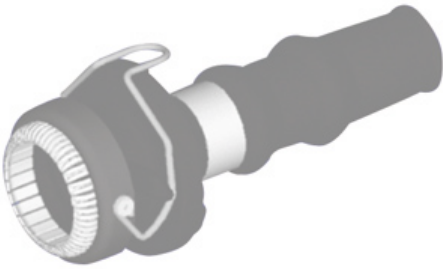
- Flow selector ring around the baffle
- Black anodized aluminium body corrosion proof
- Superblack moulded rubber teeth
- Electric remote model available



Designation	Reference
Masterfix 2500 SP	I12.41.010
Masterfix 4000 SP	I12.41.009

POLYFOAM ADAPTOR LX

Reference I12.80.001



ZF02.030.EN.1

As it is our policy to constantly seek to improve our products, we reserve the right to change the specifications of our equipment without notice

